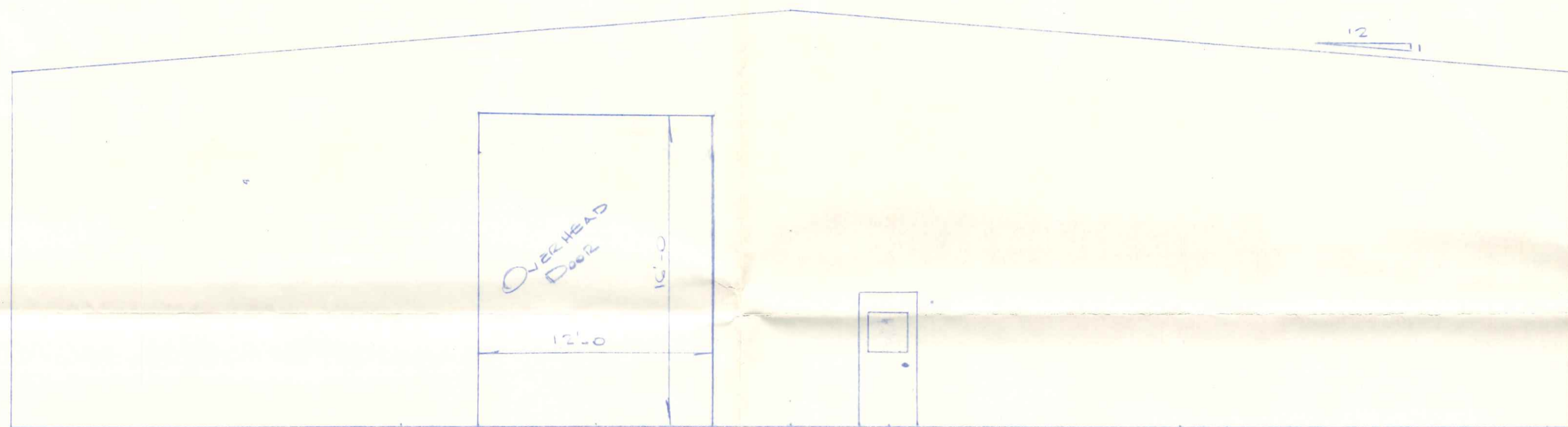
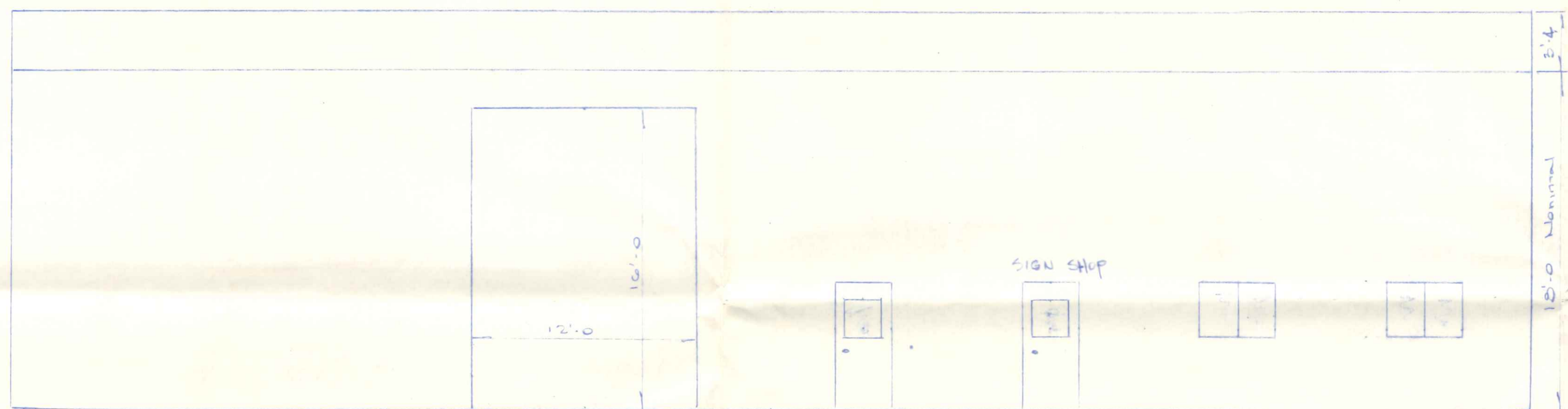


NORTH ELEVATION  
1" = 5'-0"



SOUTH ELEVATION  
1" = 5'-0"

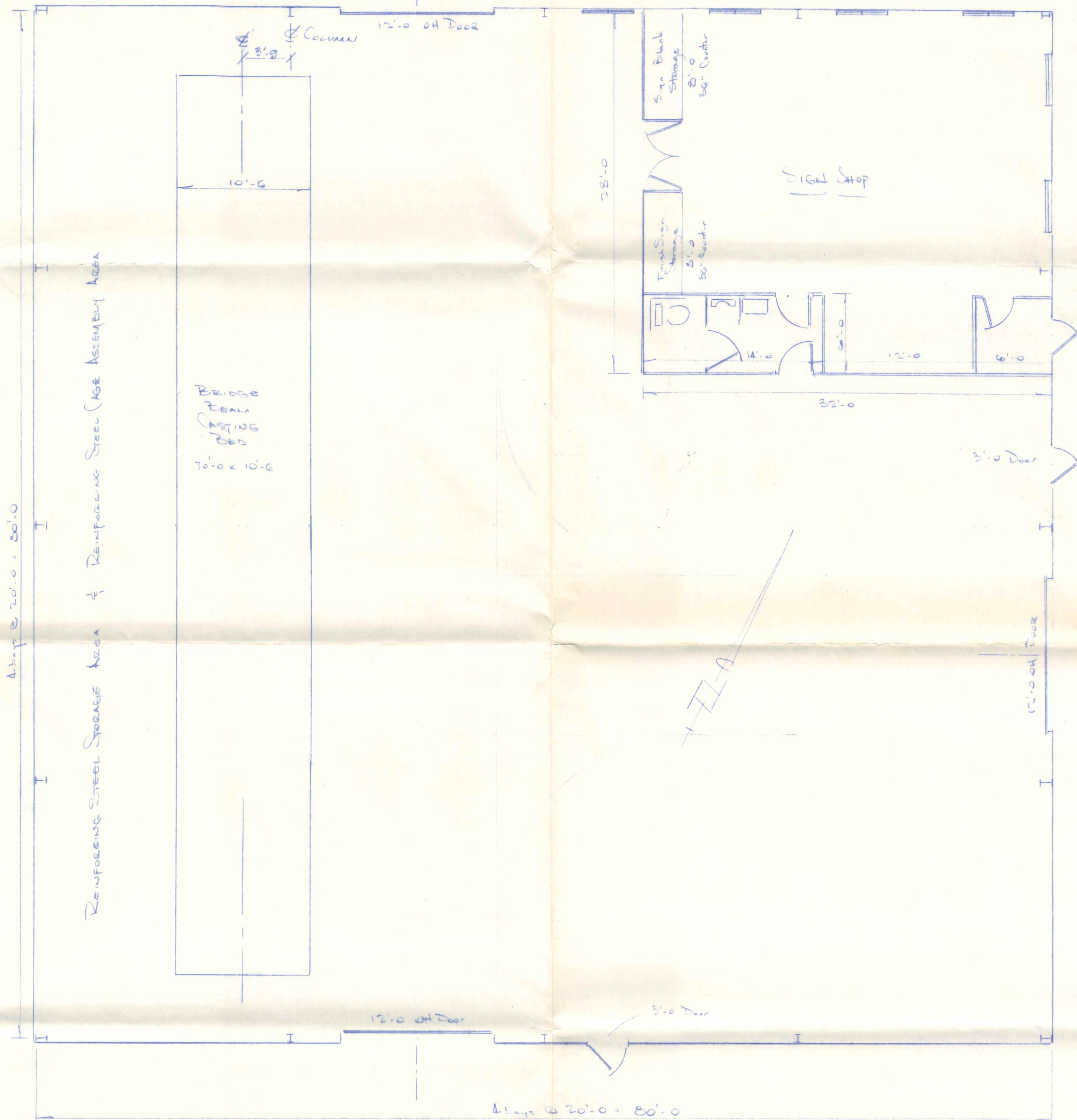


EAST ELEVATION  
1" = 5'-0"

NOTE: WEST ELEVATION BLANK WALL

3'-0" x 6'-0" EXTERIOR DOORS 3 EA  
 12'-0" x 16'-0" OVERHEAD DOORS 2 EA  
 3'-0" x 6'-0" WINDOWS 6 EA

NORTH/SOUTH RIDGE  
 FUTURE EXTENSION SOUTH



FLOOR PLAN  
1" = 5'-0"

HENRY COUNTY HIGHWAY DEPARTMENT  
 MAINTENANCE BUILDING

SIGN SHOP, BRIDGE BEAM CASTING, HEADWALL  
 CASTING & STORAGE

1343 Bales Rd.

3-27-88